

MSNswitch: Function & Features

1. Maintain internet connection by resetting crashed Routers / Modem. No software setup necessary for this (see 'hardware setup' below).
2. Automatically Power-Cycle Unresponsive Network Devices.
3. Remote power On / Off / Reset each outlet via; Web UI, Google Hangouts, API (via HTTP script or packet request) or SMS (with USB 3G modem connected).
4. Schedule power On / Off / Reset.

Model No.	Image	Socket	Socket Description
UIS-522b			Type B (US) NEMA 5-15R
UIS-523e			Type E (French) CEE 7/5 Shuttered
UIS-523f			Type F ("Schuko") CEE 7/3 Shuttered
UIS-523g			Type G (UK) BS 1363 Shuttered
UIS-522i			Type I (Australian) AS/NZS 3112 Type I (China) CCC
UIS-523j			Type J (Switzerland) SEV-1011 Shuttered
UIS-523k			Type K (Denmark) SRAAF 1962/DB Shuttered

The packaging & Content



The Unit



Description

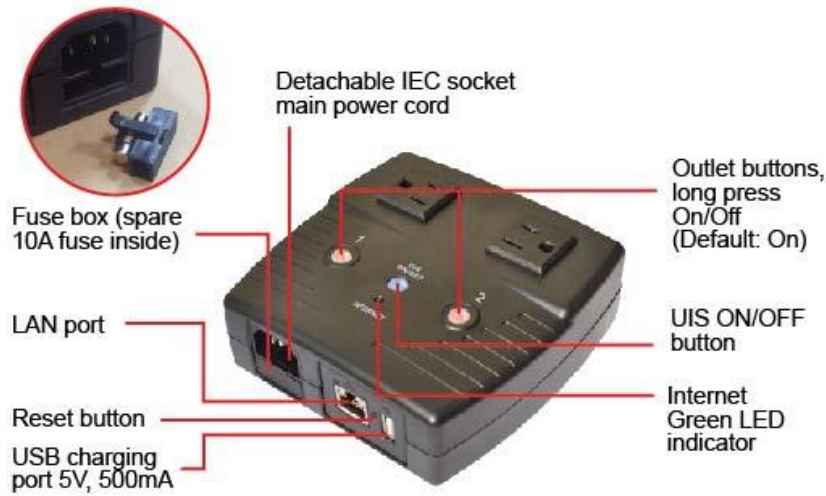
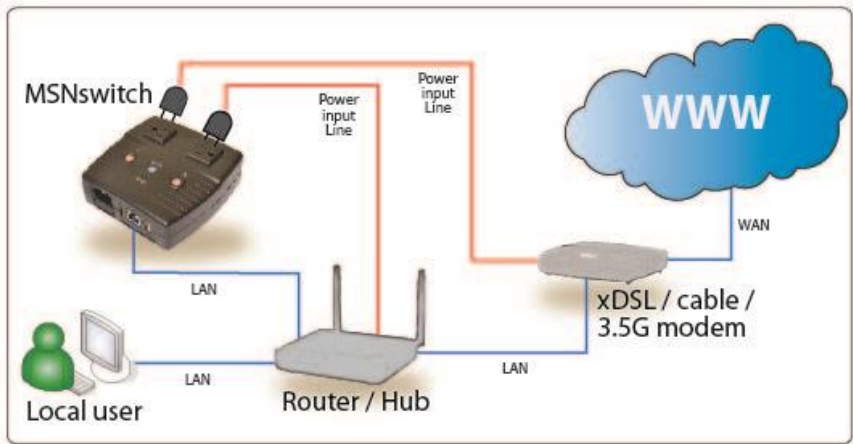


Diagram #1: *MSNswitch setup to perform auto reset of router and modem*



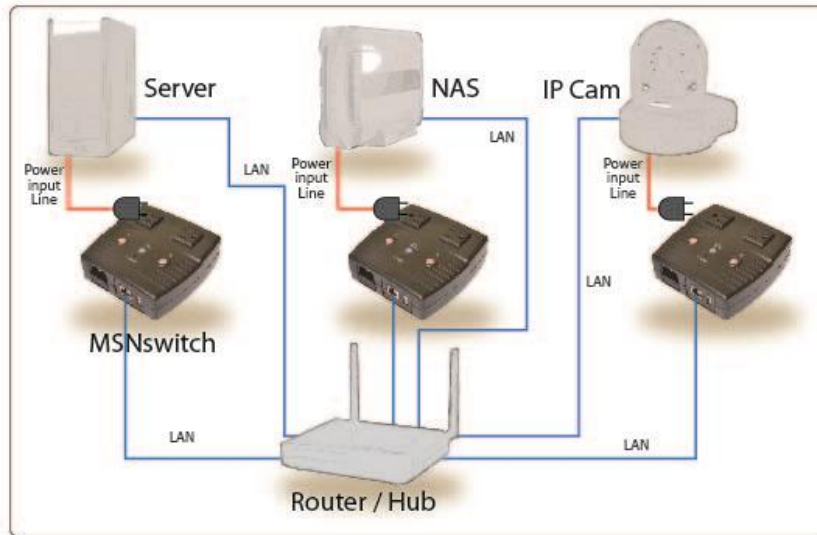
MSNswitch is an intelligent power outlet designed to automatically power-cycle its outlet when internet connectivity is lost. This is useful to if your broadband / cable / DSL connection drops or even if your router freeze-up, and all you need to do is reset the router to re-gain connectivity. MSNswitch does this automatically, without anyone having to visit the location just to flick the switch!

MSNswitch once setup (see “hardware setup”) will automatically ping five different preset target and if they are unreachable, MSNswitch will power-cycle the power outlets.

Advanced users can logon to MSNswitch User Interface to change the preset sites.

User can also setup so that one of the Outlet pings an internal IP and the other Outlet pings the remaining 4 external IPs. This allows the Outlets to Reset independently depending on which IP ping fails.

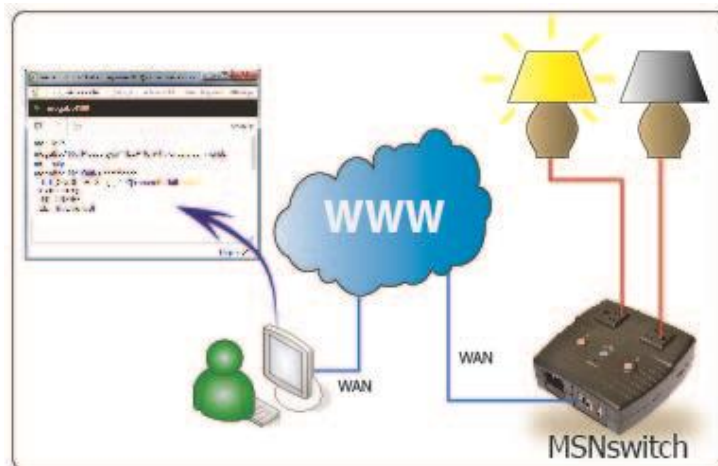
Diagram #2: MSNswitch setup to keep internet device alive.



MSNswitch can be used to automatically reset an unresponsive IP device (for instance IP camera or NAS servers). Useful if the device is at a remote site, making tedious trip just to reset the unit.

MSNswitch can be setup to schedule power on/off devices.

Diagram #3: MSNswitch setup for remote control via Hangout (Google) or thru Web User Interface. User can also access Hangout from PDA phone to control devices.



Support Google's Hangouts - Sends you notifications and allows you to issue commands to check the status, turn On/Off/Reset the outlets via Instant Messaging.

After setting up and getting connected.
 Logon to Hangouts thru either a browser
 or APP, etc...

Bring up the Hangouts dialog box.

Type anything other than Keywords will
 invoke MSNswitch to respond with
 "Please type *HELP* to list available
 commands."

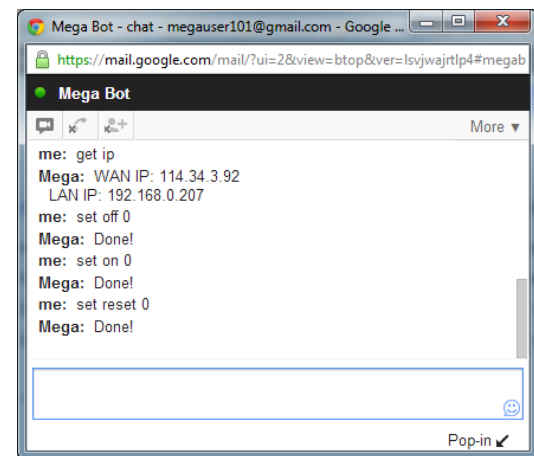
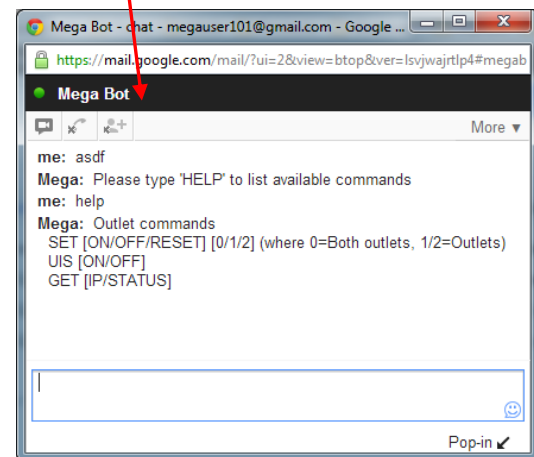
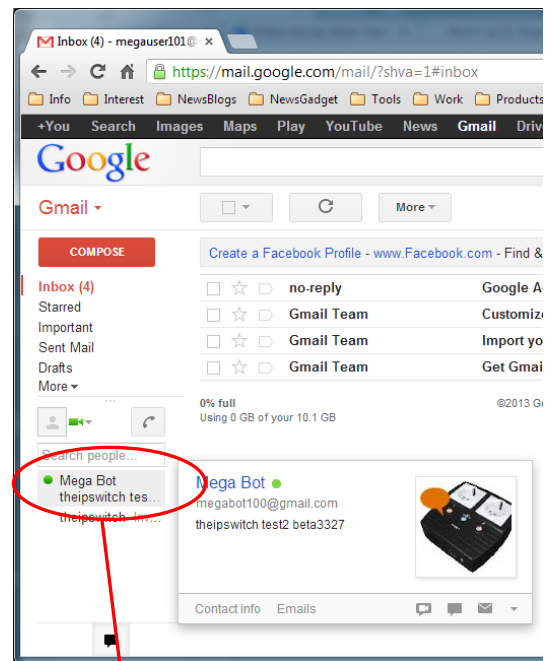
Available commands are not case
 sensitive:

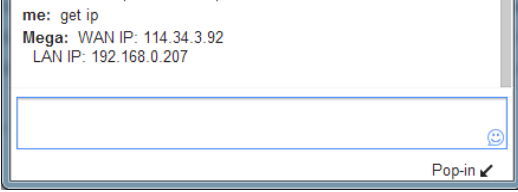
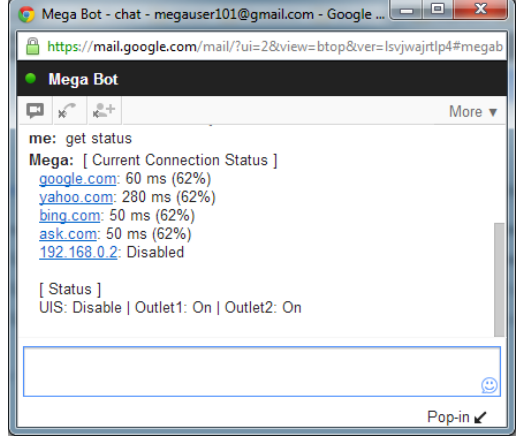
SET [ON/OFF/RESET] [0/1/2] (where
 0=both outlets, 1/2=Outlets)

UIS [ON/OFF]

GET [IP/STATUS]

SET ON / OFF / RESET command will
 return a "Done!" once MSNswitch has
 completed the action.



<p>GET IP command will return the WAN IP and the unit's LAN IP address.</p> <p>If port forwarding is set, but not the domain name, user can still use WAN IP to access MSNswitch Web User Interface from internet.</p>	
<p>GET STATUS command will return the following information.</p> <p>For [Outlet Status] the Outlet1 and Outlet2 name can be assigned. This is done at http://MSNswitch → Configuration → Configuration → Outlet Setup.</p> <p>Allow time for the system to respond.</p>	

Additional features

MSNswitch more advanced feature includes:

- **One press protect** – no internet setup required (when used to monitor router)
- **Support SMS** – sends notification and allows commands to check status, turn on/off/reset via SMS messaging. Currently support HwaWei E220 USB 3G modem & USB GSM/GPRS modem (G900/1800). Applies to MNT version only.
- **Support HTTP script or packet requests** (for advanced users).
- **USB charging** – USB slot supports iPhone charging.
- **Web Interface** - Allows you to monitor status, view logs, and change advanced settings & configurations via web browser. Easy access in LAN by typing //MSNswitch.
- **Schedule** – multiple power On/Off/Reset or UIS On/Off by date, day or week.
- **No. of UIS Resets** - Set number of times MSNswitch reset outlet when time-out.
- **Event Logs** - To keep track of when the unit had to reset power etc.
- **Dynamic DNS** – Support iCV99.net (default free), 3322.org, dhs.org, Dyn dns.org, myddns.com, zive.org.

Hardware Setup for MSNswitch (when use to monitor router)

Step 1:

Connect the power cord to device and wall outlet. The orange LED will light up and system will boot up.



Press the Orange LED for 2 seconds to turn the Outlet On / Off.

Step 2:

Connect the power plug to MSNswitch outlet.



Step 3:

Connect LAN cable from your router.



Step 4:

Make sure the Internet LED light is *blinking* indicating internet connection is ready.

Press and hold (2 seconds) "UIS On/Off" button to activate internet protection.





Specifications:

Product	MSNswitch
Certification	CE, FCC, RoHS Compliant
Electrical Rating	Input: 100~240VAC, 50/60Hz Output: 10A (for 2 sockets) & DC5V, 500mA (for USB port)
Fuse	10A (Thermal fuse)
Available Sockets	2x fixed
Internet Control-able	2x fixed socket
Power ON / OFF switch	Individual outlet power ON / OFF LED button (Press & hold 2 seconds)
Compatible USB device	HwaWei E220 USB 3G modem HwaWei
Reset to Factory Def.	Long press all 3 LED buttons
Web Server CPU	32-Bit RISC CPU
Supported browser	IE and Java
Supported Network Protocols	HTTP, TCP/IP, UDP, SMTP, Dynamic DNS, DNS Client, SNTP, DHCP.
Network Access	10/100 Base-T , RJ45 (Cat. 5)
Operating Environment	0°C ~ 60°C at 10% ~ 90% relative humidity. For indoor use only.
Package	White Box / Bulk
Packaging Size	21.5 x 14.5 x 9.0 CM
Gross Weight per set:	0.750kgw
Per Carton:	20 sets per carton
Carton size:	50 x 38 x 36 CM
Net (Gross) Weight:	15.0kgw (16.5kgw)